

# Worksman MG/MGR Unisex Bicycle Owner's Manual

Worksman Trading Corporation . 94-15 100<sup>th</sup> Street . Ozone Park, NY 11416 . (718) 322-2000

www.worksmancycles.com

Parts list UNISEXBIKE16



Congratulations! You have purchased an American-made Worksman Unisex bicycle. Worksman bicycles are considered the most durable bicycles available. This manual covers the MG and MGR Unisex Comfort Step-Through 24+Cruisers.

Before assembling and riding, be sure to read this manual thoroughly. Always follow the rules of safe riding. Always keep your Worksman in tip-top shape by replacing worn parts as needed with genuine Worksman Cycles parts. (Do not use generic bicycle parts.) With simple maintenance, your Worksman will perform reliably day after day, year after year. Your bicycle has been hand-made in the USA by our American craftspeople. Our reputation rides along with you, so your ultimate satisfaction is our goal.

## **Worksman MG/MGR Bicycle Parts List** (Subject to change without notice as we are constantly seeking ways to improve our products.)

### **Frame, Fork and Headset Parts** (Specify color of frames and forks when ordering.)

| <u>Part #</u>                  | <u>Description</u>                | <u>Part #</u> | <u>Description</u>            |
|--------------------------------|-----------------------------------|---------------|-------------------------------|
| 3900R                          | Frame: Unisex reinforced          | 154           | Fork (24+, Silver)            |
| F818                           | Strap for fork (Drum brake only)  | 55A           | Stem for Handlebar            |
| <i>Headset and Other Parts</i> |                                   |               |                               |
| 55F                            | Handlebar                         | 5031          | Front Reflector Bracket       |
| 48                             | Headset Cups (pair)               | 49            | Headset Bearings (pair)       |
| 50A                            | Headset Complete (48,49,52,53,54) | 51            | Bottom Cone (Presses on fork) |
| 52                             | Top Adjusting Cone (threaded)     | 53            | Key Washer                    |
| 54                             | Fork Top Locknut                  | 55B           | Handgrips (pair)              |

### **Crank Parts (Pedal Section) and Chains**

| <u>Part #</u> | <u>Description</u>                               | <u>Part #</u> | <u>Description</u>                  |
|---------------|--|---------------|-------------------------------------|
| 1265          | Crank Parts (1266,1268,1269,1271,1272,1273,1274) | 1265BMXS      | Deluxe Sealed Crank Set (Upgrade)   |
| 1266          | Crank Bearings (pair)                            | 4915          | Chain Adjusters (for coaster brake) |
| 1268          | Cups for Crank Housing (pair)                    | 1269          | Stationary Washer (inside)          |
| 1271          | Key Washer (outside)                             | 1272          | Adjusting Cone (threaded, outside)  |
| 1273          | Stationary Cone (inside)                         | 1274          | Crank Locknut                       |
| 3275          | Crank (One piece, forged, 5.5+)                  | 7217          | Pedal Set (pair)                    |
| 4910P-BLK     | Chainguard                                       |               |                                     |

#### *MGR Specific Parts (Below)*

|        |                                       |
|--------|---------------------------------------|
| 1380   | Sprocket 44 Tooth (3/16+) (Standard)  |
| 1380D  | Sprocket 36 Tooth (3/16+) (Optional)  |
| 4914A  | Chain Connecting Link (1/2x3/16+)     |
| 4914R  | Chain Half-Link (3/16+)               |
| 4914AA | Chain (3/16x103 links . 44T sprocket) |
| 4914BB | Chain (3/16x97 links . 36T sprocket)  |

#### *MG Specific Parts (Below)*

|        |                                      |
|--------|--------------------------------------|
| 1380B  | Sprocket 44 Tooth (1/8+) (Standard)  |
| 1380C  | Sprocket 36 Tooth (1/8+) (Optional)  |
| 4914M  | Chain Connecting Link (1/2x1/8+)     |
| 4914R1 | Chain Half-Link (1/8+)               |
| 4914W  | Chain (1/8x103 links . 44T sprocket) |
| 4914H  | Chain (1/8x97 links . 36T sprocket)  |

### **Baskets (Optional)**

| <u>Part #</u> | <u>Description</u>                   | <u>Part #</u> | <u>Description</u>           |
|---------------|--------------------------------------|---------------|------------------------------|
| 133WH         | Removable Front Basket (14.5x9.5x9+) | 139           | Front Wire Basket (18x13x6+) |

### **Seats, Seatpost, Kickstand**

| <u>Part #</u> | <u>Description</u>                | <u>Part #</u> | <u>Description</u>      |
|---------------|-----------------------------------|---------------|-------------------------|
| 4912V         | Saddle (10+w/ springs)            | 6910V         | Saddle (13+w/o springs) |
| 6911V         | Saddle (13+extra-wide w/ springs) | 4908D         | Seatpost (1+)           |
| 4911D         | Seatpost Clamp (Post to frame)    | 7229A         | Kickstand               |

## Wheels, Tires, and Tubes

| <u>Part #</u>                                      | <u>Description</u>                      | <u>Part #</u>                                    | <u>Description</u>                     |
|--|---|--|--|
| <i>MGR (24" x 2.125") Wheels and Parts (Below)</i> |   | <i>MG (24" x 1.75") Wheels and Parts (Below)</i> |  |
| 4135QA   | 24+Front Wheel w/o Tire (No drum brake) | M24F   | 24+x 1.75+Front Wheel w/o Tire         |
| 7724A  | 24+Front Drum Brake Wheel w/o Tire      | 466A   | 24+x 1.75+Front Drum Brake Wheel       |
| 4135A  | 24+x 2.125+Rear Wheel w/o Tire          | M24CB  | 24+x 1.75+Rear Wheel w/o Tire          |
| SMX243CB   | 24+x 2.125+Rear 3 SPEED Wheel w/o Tire  | M243CB   | 24+x 1.75+Rear 3 SPEED Wheel           |
| 4922E  | 24+x 2.125+Blackwall Tire               | 6032   | 24+x 1.75+Blackwall Tire               |
| 4922EKV  | 24+x 2.125+Kevlar Blackwall Tire        | 6032W  | 24+x 1.75+Whitewall Tire               |
| 4922ESW  | 24+x 2.125+Whitewall Tire               | 6032A  | 24+x 1.75+Tube (Standard)              |
| 4923E  | 24+x 2.125+Tube (Standard)              | 1014K  | Spokes & Nipples (.080+) for 24+Wheels |
| 6023B  | 24+x 2.125+Tube (Puncture Resistant)    |  |  |
| 1014C  | Spokes & Nipples (.120+) for 24+Wheels  |  |  |
| 1017B  | 24+Rimstrip (1.75+OR 2.125+)            | 1018   | Valve Cap (Any tube)                   |

## Fenders and Parts (MG Only) (Fenders are not available for Heavy-Duty MGR bicycles.)

|       |                                       |      |                            |
|-------|---------------------------------------|------|----------------------------|
| FSB24 | Complete Fender Set (Front & Rear)    | 95   | Fender L-Bracket           |
| 4803  | Front Fender                          | 4804 | Rear Fender                |
| 4803K | Front Fender Parts Kit (All hardware) | 4805 | Front or Rear Fender Brace |

## Safety and Comfort Accessories

| <u>Part #</u> | <u>Description</u>                                    | <u>Part #</u> | <u>Description</u>                    |
|---------------|---|---------------|---------------------------------------|
| 3979          | Ding Dong Chime Bell                                  | 303           | Squeeze Bulb Horn                     |
| 3973          | Mega-Horn (battery operated)                          | 201           | Cable and Lock set                    |
| 4963          | Rear View Mirror                                      | 5032          | Reflector Kit (Does not include 5031) |
| 3978          | Safety Flag on Pole                                   | P19           | Bicycle Helmet                        |
| 101710        | Flashing Strobe Light (clear lens)                    | 101714        | Flashing Strobe Light (red lens)      |
| 7217-41197    | Pedals with Velcro Foot Straps (pair)                 | 3975          | Generator Light Set                   |
| 1006          | Air Foot Pump   | 1000          | Spoke Wrench                          |
| 2000          | Chain Rivet Remover Tool                              | 1265TW        | Crank Cone Wrench                     |
| 1001          | Pedal Wrench  |               |                                       |
| 6001A         | Patch Kit (50)  | 3976          | Battery Operated Headlight            |
| 7217GS12      | %@lowspeck+Flashing Pedals . Flash without batteries! |               |                                       |

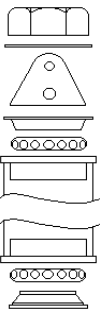
## ASSEMBLY INSTRUCTIONS

*Please read this manual carefully prior to performing the simple finishing assembly and prior to riding. We recommend that a qualified bicycle mechanic assemble any cycle. Carefully remove the bicycle from the carton. You will notice the bicycle is mostly pre-assembled at the factory.*

### **TO ATTACH FRONT FORK/WHEEL ASSEMBLY TO THE FRAME:**

#### *Headset Assembly:*

- 1) Grease headset cups (48) with Rustolene 200 (light grease) or equal. Bearings (49) are pre-greased at the factory, but it is wise to add lubrication before assembly.
- 2) Place one headset bearing (49) onto fork steerer tube with balls facing up. Slide steerer tube into frame.
- 3) Place the other bearing on top of fork tube with balls facing down towards the cup (#48), which is already pressed onto the frame.
- 4) Install top-adjusting cone (52) onto treaded fork steering tube. Hand-tighten, making sure bearings do not bind. Turn back ¼ turn.
- 5) Install fork key washer (53) and reflector bracket on top of the adjusting cone with tip of washer in slot on steering tube.
- 6) Install head lock nut (54) and securely tighten. Make sure that the fork rotates freely without being loose. Excess play or resistance must be adjusted. Failure to adjust properly can lead to improper steering response.
- 7) Install handlebar stem (55A) into the fork steering tube with the handlebar clamp facing forward. The stem must be inserted far enough to reach the minimum insertion line. Tighten the stem bolt slightly at this point. Loosen the handlebar clamp nut and slide the handlebar through the clamp, centering the knurled center section of the handlebar into the clamp.
- 8) Position the handlebar to the desired angle and tighten clamp securely. Recommended torque is 300 IN. LBS. Adjust the handlebar rotation so that it is straight with the front wheel. Tighten stem bolt securely. Recommended torque 240 IN. LBS. Be sure not to over tighten, as damage to the parts may occur causing steering failure.
- 9) If a drum brake was ordered, attach brake lever to handlebar Make sure brake cable is not tangled in any way.



## INSTALLING PEDALS AND KICKSTAND:

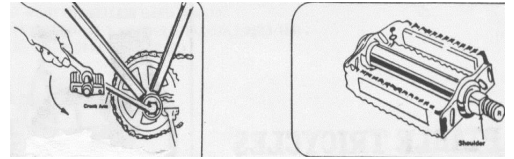
1) Install kickstand.

2) Pedals are marked on the shaft with either an “L” or “R” denoting left or right. The “R” pedal fits on the right (sprocket side) of the crank arm.

Tighten clockwise. The “L” pedal fits on the left side of the crank arm.

**Tighten counter-clockwise (left-hand thread).** Securely tighten.

Recommended torque 275 IN. LBS. *CAUTION: Tightening in the wrong direction will damage the crank threads, and will not be covered under warranty.*



## SEAT ADJUSTMENTS:

Adjust the seat height to your desired level by loosening the seat clamp nut at the top of the frame's seat tube. Re-tighten at desired height. Make sure a minimum of 3 1/2" of the post remains in the frame tube. Never adjust post above this level. Adjust angle of seat with nose raised slightly. Tighten seat clamp securely. (240 IN. LBS.)

## MAINTENANCE TIPS:

Always inspect your Worksman Cycle to ensure that all nuts, bolts, screws and hardware are tight and that no parts are worn or damaged. Do not attempt to straighten bent forks or frames.

### Chain:

Lubricate chain once a month or as needed with light oil. Replace sprockets when teeth become worn, bent or broken. Keep chain adjusted so there is no more than 3/8" slack. Note that we make the chains tight at the factory, as we do know they will stretch during the break-in period. Lubricate crank parts every six months. Replace pedals when the surface is worn or if axle becomes light or frozen.

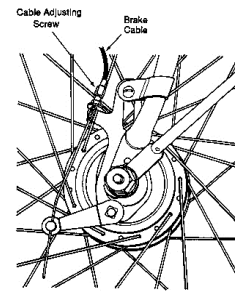


### Drum Brake:

Some Worksman bicycles are equipped with a front drum brake. It is engaged by squeezing the hand lever on the handlebar. To use Park+ feature, when cycle is completely stopped, squeeze hand lever and push in parking plunger button on lever. To disengage, simply squeeze lever until parking plunger button releases. Drum brakes are pre-adjusted at the factory. Readjust the cable tension as necessary using the adjusting barrel so that wheel spins freely and stops when brake is applied. Always replace worn brake cables and damaged hand levers.

### Coaster Brake (if applicable):

Foot activated coaster brakes are easy to use and reliable. To activate this internal brake, reverse the pedaling motion until the brake engages. To avoid skidding and maintain control, apply care when braking. This is especially true on wet surfaces. Apply brakes gently, gradually increasing pressure. Replace coaster brakes when they become worn. Check chain tension regularly. Coaster brake hubs may make a vibrating noise under braking until they are broken in.



### Tires:

Always check for wear or damage. We recommend 40PSI as proper level of inflation. Replace worn or cut tires and leaking tubes immediately.

## LIMITED WARRANTY:

THIS CYCLE IS WARRANTED AGAINST FAULTY PARTS UNDER THE FOLLOWING CONDITIONS: THIS WARRANTY DOES NOT COVER ANY FAILURE DUE TO ACCIDENT, ABUSE, MISUSE, NEGLIGENCE OR AS THE RESULT OF NORMAL WEAR AND TEAR, OR IMPROPER ASSEMBLY. THE ENTIRE FRAME, INCLUDING ALL WELDED JOINTS, IS WARRANTED TO BE FREE FROM DEFECTS AND MATERIAL FOR ONE YEAR WHILE IN POSSESSION OF THE ORIGINAL PURCHASER. ALL OTHER PARTS ON THIS CYCLE, EXCEPT TIRES AND TUBES, ARE WARRANTED FOR 90 DAYS FROM THE DATE OF PURCHASE. REPAIR AND REPLACEMENT OF THESE PARTS IS TO BE ACCORDING TO THE WORKSMAN CYCLES PARTS AND SERVICE PROCEDURES AND MUST BE HANDLED DIRECTLY THROUGH THE SOURCE WHERE THE CYCLE WAS PURCHASED. IF UPON EXAMINATION OF THE PARTS IN QUESTION, THE WORKSMAN CYCLE DEALER DETERMINES THAT IT IS DEFECTIVE, EITHER REPAIR OR REPLACEMENT WILL BE MADE AT NO COST EXCEPT THE COST OF TRANSPORTATION AND LABOR CHARGES (IF ANY). UNAUTHORIZED REPAIRS OR REPLACEMENT AUTOMATICALLY VOIDS WARRANTY. PROPER MAINTENANCE IS REQUIRED FOR WARRANTY TO BE VALID. IN THE EVENT THAT IT WAS DETERMINED THAT THE WARRANTY CLAIM IS THE RESULT OF MISUSE, ABUSE, IMPROPER MAINTENANCE OR SIMPLY NOT DEFECTIVE OR BEYOND THE WARRANTY PERIOD, WORKSMAN CYCLES OR THE DEALER WILL ADVISE YOU AS TO THE COST OF REPAIR, REPLACEMENT OR LABOR PRIOR TO PERFORMING ANY WORK OR REPLACING ANY PARTS. IF YOU CHOOSE NOT TO HAVE THE DEALER OR WORKSMAN CYCLES PERFORM THE WORK, THE PARTS WILL BE RETURNED TO YOU AT YOUR EXPENSE OR DISCARDED IF NO REPLY IS RECEIVED WITHIN 2 WEEKS OF NOTIFICATION. THE SOLE RESPONSIBILITY OF THE MANUFACTURER TO THE TERMS OF THIS WARRANTY, IF ANY, SHALL BE THE REPAIR AND/OR REPLACEMENT OF THE PARTS AS INDICATED ABOVE. THE LIABILITY OF THE MANUFACTURER SHALL IN NO EVENT EXCEED THE ORIGINAL PURCHASE PRICE OF THE PRODUCT, AND THE MANUFACTURER SHALL NOT BE RESPONSIBLE FOR ANY CONSEQUENTIAL DAMAGES OF ANY NATURE, INCLUDING, BUT NOT BY WAY OF LIMITATION, DAMAGES FOR PERSONAL INJURY OR PROPERTY. THIS STATEMENT CONSTITUTES THE EXCLUSIVE EXPRESSION OF WARRANTIES BY THE MANUFACTURER AND IS IN LIEU OF ANY OR ALL OTHER WARRANTIES SUCH AS EXPRESSED WARRANTIES, IMPLIED WARRANTIES, INCLUDING BUT NOT LIMITED TO WARRANTIES OF MERCHANTABILITY, AND FITNESS OR PURPOSE, ARE LIMITED IN DURATION FOR ONE YEAR FROM THE DATE OF PURCHASE OF THE FRAME ONLY AND 90 DAYS FOR ALL OTHER PARTS. EXCEPT TIRES AND TUBES WHICH ARE NOT WARRANTED. WORKSMAN TRADING CORPORATION IS THE MANUFACTURER. MISUSE OF THE CYCLES INCLUDING OFF ROAD RIDING, INSTALLATION OF MOTORS OR POWER ASSISTS, ALTERATIONS, REPAIRS USING PARTS OTHER THAN WORKSMAN CYCLE PARTS VOIDS WARRANTY. WORKSMAN TRADING CORPORATION IS NOT RESPONSIBLE FOR MAINTAINING RECORDS OF SERIAL NUMBERS. VOID WHERE PROHIBITED BY STATE LAW.

## RULES FOR SAFE RIDING AND RESPONSIBLE OPERATION: Carefully read this manual before operating the cycle.

- It is the responsibility of the assembler to properly install all parts included and to inspect the cycle prior to riding to insure proper operation.
- Wear a helmet!
- Operator is responsible for required maintenance and for observing all traffic regulations in the operating environment. (Stop signs, etc.)
- Keep to the right and in a straight line. Ride in single file. Operate cycle at slow speeds, particularly in high traffic areas.
- Do not ride outdoors at night, and use appropriate signaling methods as needed. (We recommend the 3973 Mega Horn and P122 light kit.)
- Give pedestrians the Right of Way. Always look around you to understand the riding environment and hazards.
- Do not carry passengers, and check brakes prior to riding. Never ride the cycle if there are known repairs required.
- Slow down when approaching turns or intersections.
- Recommended safety options include, but are not limited to, an approved helmet, audible warning device, front/rear lights and/or reflectors.
- Do not exceed the recommended weight capacity. (MG: 210 lbs. / MGR: 350 lbs.) Always secure cargo with appropriate tie down straps.
- Wipe surface of cycle clean and dry when exposed to corrosive substances or environment.
- Operators of cycles should be in good physical condition. Ride at your own risk.
- Wear proper riding attire. Check shoelaces and pant legs prior to riding so they do not become engaged in the chain and sprocket.
- Ride only on smooth, paved surfaces. Do not use off road. Always keep both hands on the handlebars.
- Always replace worn parts with genuine Worksman Cycle Repair Parts.

**Visit us online at [www.worksmancycles.com](http://www.worksmancycles.com) or call us at 888-3WHEELER!**